



General Certificate of Secondary Education
2024

Centre Number

--	--	--	--	--

Candidate Number

--	--	--	--	--

Construction and the Built Environment

Unit 1

Introduction to the Built Environment



[GCN11]

GCN11

WEDNESDAY 29 MAY, AFTERNOON

TIME

1 hour.

INSTRUCTIONS TO CANDIDATES

Write your Centre Number and Candidate Number in the spaces provided at the top of this page.

You must answer the questions in the spaces provided.

Do not write outside the boxed area on each page or on blank pages.

Complete in black ink only. **Do not write with a gel pen.**

Answer **all six** questions.

INFORMATION FOR CANDIDATES

The total mark for this paper is 80.

Figures in brackets printed down the right-hand side of pages indicate the marks awarded to each question or part question.

Quality of written communication will be assessed in question **2(e)**.



1 (a) Describe what is meant by the term **built environment**.

[2]

(b) The construction industry can be divided into three main activities. State each of these **three** main activities and describe each one with an example.

1. _____ [1]

[3]





2. _____ [1]

_____ [3]

3. _____ [1]

_____ [3]



2 **Fig. 1** and **Fig. 2** show a sectional view and photograph of a structure commonly used in the construction process. The Architect has appointed a Structural Engineer to design the structure.

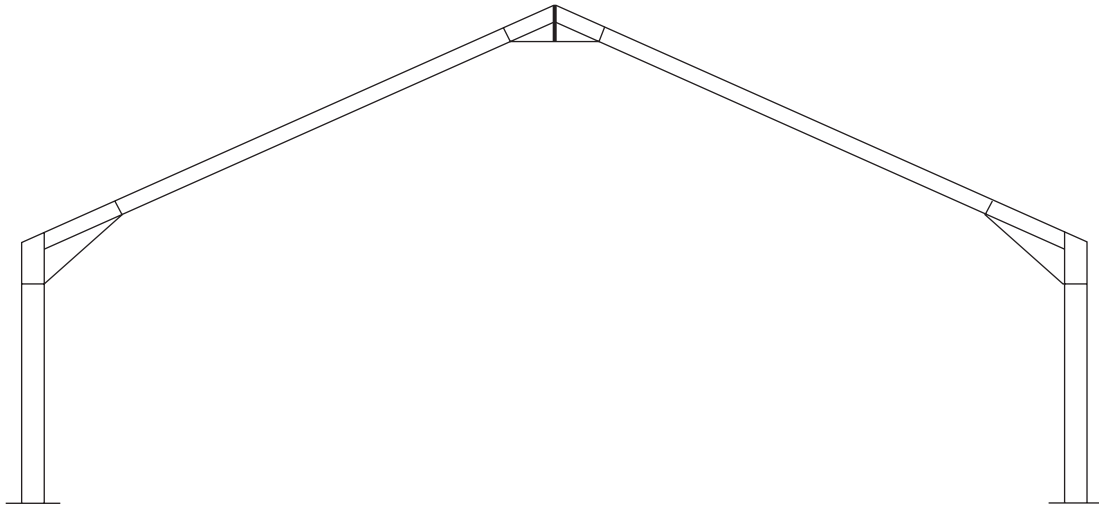


Fig. 1



Fig. 2

Source: © CCEA



(a) Name the type of structure shown in **Fig. 1** and **Fig. 2**.

_____ [1]

(b) List the **three most common** materials which this structure is normally manufactured from.

1. _____ [1]

2. _____ [1]

3. _____ [1]

(c) State **two common** uses for this structure.

1. _____ [1]

2. _____ [1]

(d) Describe the main role of the structural engineer in this project.

_____ [2]

[Turn over



4 The construction industry is one of the most dangerous industries to work in. Each year there are many deaths and accidents. Health and Safety legislation has been introduced to keep workplaces and individuals safe.

(a) State the name of the Health and Safety legislation that has been introduced in Northern Ireland.

_____ [1]

(b) This legislation creates duties for different groups of people. List **three** groups below.

1. _____ [1]

2. _____ [1]

3. _____ [1]

(c) Poor manual handling can cause many types of injury. List **three** below.

1. _____ [1]

2. _____ [1]

3. _____ [1]



(e) The current CDM Regulations require employers to carry out a suitable and sufficient risk assessment. Complete the risk assessment below for **three** hazards associated with working at height.

Risk Assessment					
Activity	Hazard	Persons exposed	Severity 3–major 2–serious 1–minor	Likelihood 3–highly likely 2–likely 1–unlikely	Risk 9–greatest 1–lowest
Working at height					
Working at height					
Working at height					

[9]





BLANK PAGE

DO NOT WRITE ON THIS PAGE

(Questions continue overleaf)

14226

[Turn over



16GCN1111

5 There are a variety of methods and materials used in the construction of buildings. Explain what is meant by the following terms. Each explanation should have at least **three** clear points/criteria.

(a) Softwood

[3]

(b) Hardwood

[3]



(c) Mortar

[3]

(d) Insulation

[3]

[Turn over



(d) Describe the main characteristics of community buildings.

[2]

THIS IS THE END OF THE QUESTION PAPER



DO NOT WRITE ON THIS PAGE

For Examiner's use only	
Question Number	Marks
1	
2	
3	
4	
5	
6	

Total Marks	
--------------------	--

Examiner Number

Permission to reproduce all copyright material has been applied for.
In some cases, efforts to contact copyright holders may have been unsuccessful and CCEA will be happy to rectify any omissions of acknowledgement in future if notified.

GCN11/3
290435



16GCN1116

